



Best
Practice
Network

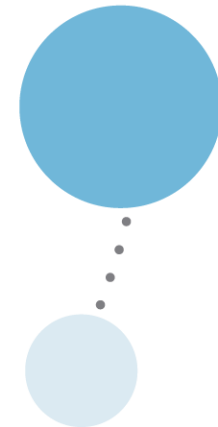


Outstanding
Leaders
Partnership



National Professional Qualifications (NPQs): Leadership Route

An introduction to the new leadership
programmes: NPQSL, NPQH, NPQEL



Briefing purpose

- Introduce the Outstanding Leaders Partnership and Best Practice Network
- Provide an insight into the NPQ leadership route programme content areas, timescales and structure
- Trigger an interest and curiosity into the NPQ leadership route so you want to find out more and apply for one of the three programmes!

Best Practice Network & Outstanding Leaders Partnership

Every child able to benefit from an excellent education, regardless of background

Every education professional able to grow and give their best



Known & **Trusted**
'Exceptional' Provision

98% Satisfaction
95% Pass Rate

- School-led CPD provider since 2012
- Proven infrastructure having supported 14,000+ participants over the last 3yrs
- Deliver accredited CPD through a 160 strong national partner-led model
- Provider of Apprenticeships, ECF, EYITT, HLTA, NASENCO & more
- Exceeding DfE performance [metrics](#)
- Dedicated and expert programme, participant and partner support teams

Our work with schools for schools

At the heart of our work with/across schools are:

- our NPQ programmes designed and built on evidence, expert guidance and school led quality practice
- **our participants** who commit to building their knowledge and skills to be even better leaders for the pupils in schools
- our national network of delivery partners who contribute to assuring strong, locally driven professional development quality programmes
- our workforce who provide the direction and support the ambition of every participant to grow and contribute to school improvement and pupil outcomes.

NPQ programmes: what has changed?

Specialist NPQs

NPQ Leading Teaching (NPQLT)

NPQ Leading Teacher Development (NPQLTD)

NPQ Leading Behaviour & Culture (NPQLBC)

Leadership NPQs

NPQ Senior Leadership (NPQSL)

NPQ Headship (NPQH)

NPQ Executive Leadership (NPQEL)

What has changed?

- There are 6 NPQ programmes not 4
- The NPQML programme has been replaced with 3 specialist route programmes, increasing offer scope
- The leadership route will last 18 months not 12
- There are no school improvement project or placement based assessment. These have been replaced by one end of programme summative assessment task based on a case study.



Leadership NPQ programmes: who can apply?

NPQ Senior Leadership (NPQSL)

For those who are, or aspire to be, senior leaders leading across a school

NPQ Headship (NPQH)

For those who are, or aspire to be, headteachers leading across a whole school

NPQ Executive Leadership (NPQEL)

For those who are, or aspire to be, executive leaders with responsibility across more than one school



Best
Practice
Network



Outstanding
Leaders
Partnership

Leadership NPQ programmes: assessment

- 18 month programme followed by summative assessment task
- Case study (will only cover content which is referred to in the NPQ Content Framework)
- SAT will allow participants to demonstrate understanding of the DfE's NPQ Framework 'learn that' statements and how they can successfully apply this new knowledge through the 'learn how to' statements
- The SAT will have its own mark scheme and marks will be awarded for both 'learn that' and 'learn how to' statements
- The SAT submission is 1,500 words: participants receive the unseen case study at the start of an eight-day assessment window and submit their response by midnight of the eighth day
- This SAT window falls 18-21 months after the start of the programme.
- Participants are required to meet 90%+ engagement as well as a successful SAT to pass their programme

DfE Leadership Framework Content Area coverage

1. School Culture

2. Teaching

3. Curriculum & Assessment

4. Behaviour

5. Additional and Special Education Needs/Disabilities

6. Professional Development

7. Organisational Management

8. Implementation

9. Working in Partnership

10. Governance and accountability



NPQEL Programme overview: structure

INDUCTION STAGE	Induction (incl. Initial needs analysis: 1 hour)	6 hours	Total Guided Learning Hours: 124
DEVELOPMENT STAGE	Face-to-face events	36 hours	
	Online course study	38 hours	
	Formative assessment tasks	34 hours	
	Leadership performance coaching	10 hours	
SUMMATIVE ASSESSMENT STAGE	Case study scenario	Max. 1500 words	

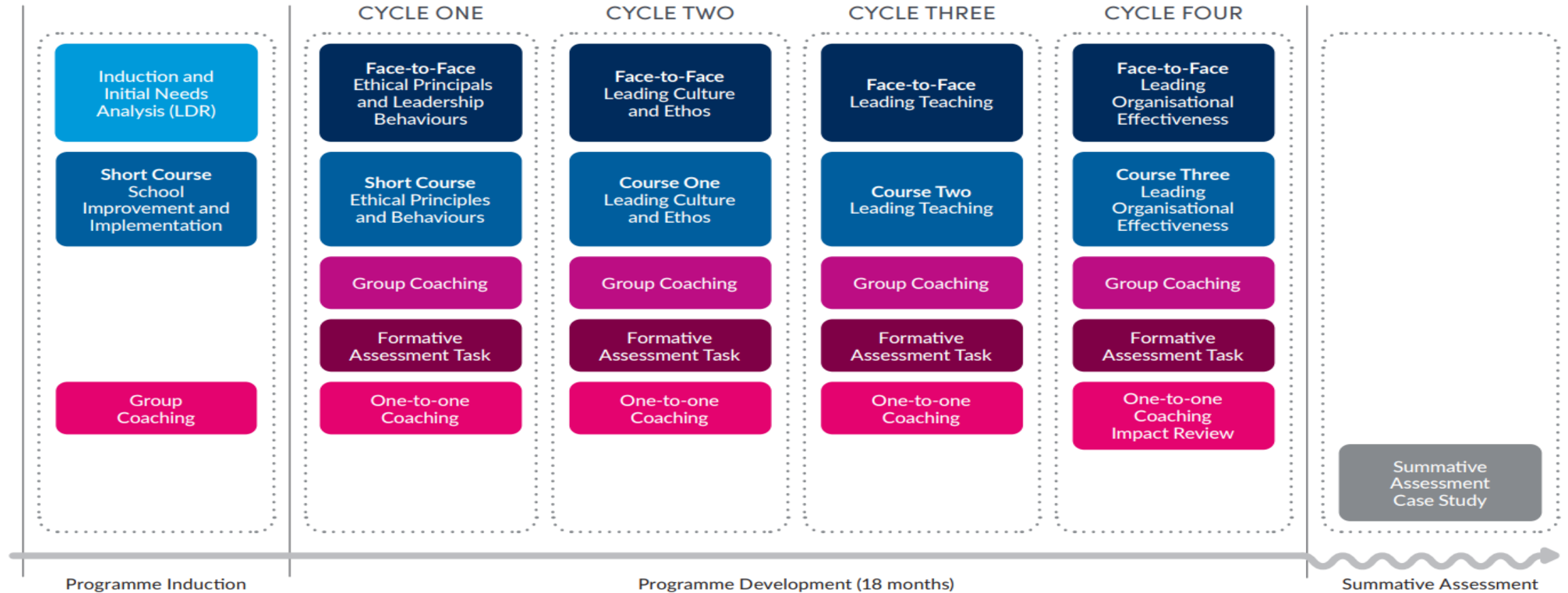
NPQH Programme overview: structure

INDUCTION STAGE	Induction (incl. Initial needs analysis: 1 hour)	6 hours	Total Guided Learning Hours: 112
DEVELOPMENT STAGE	Face-to-face events	30 hours	
	Online course study	38 hours	
	Formative assessment tasks	28 hours	
	Leadership performance coaching	10 hours	
SUMMATIVE ASSESSMENT STAGE	Case study scenario	Max. 1500 words	

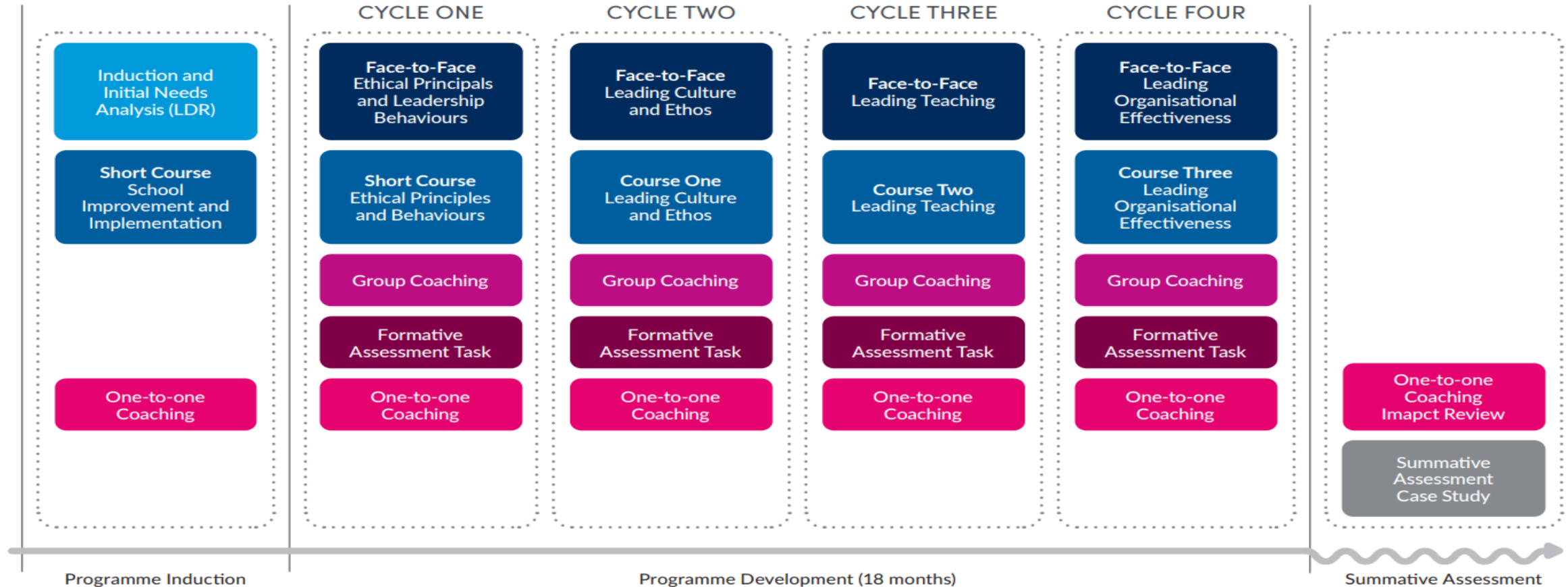
NPQSL Programme overview: structure

INDUCTION STAGE	Induction (incl. Initial needs analysis: 1 hour)	6 hours	Total Guided Learning Hours: 97
DEVELOPMENT STAGE	Face-to-face events	24 hours	
	Online course study	38 hours	
	Formative assessment tasks	20 hours	
	Leadership performance coaching	9 hours	
SUMMATIVE ASSESSMENT STAGE	Case study scenario	Max. 1500 words	

NPQSL Leadership Framework



NPQH & NPQEL Leadership Framework



Leadership NPQs: a participant perspective of the programme

Lyndon Evans – NPQEL graduate



Programme fees

Programme	Course fee (non-Scholarship, UK)	Course fee (State funded schools)
National Professional Qualification for Leading Teacher Development (NPQLTD)	£895	All NPQ programmes can be accessed through the DfE Scholarship route
National Professional Qualification for Leading Behaviour and Culture (NPQLBC)	£895	
National Professional Qualification for Leading Teaching (NPQLT)	£895	
National Professional Qualification for Senior Leadership (NPQSL)	£1,135	
National Professional Qualification for Headship (NPQH)	£1,975	
National Professional Qualification for Executive Leadership (NPQEL)	£4,090	

Apprenticeship funded routes

- Apprenticeships are work-based training programmes for new and existing staff
- All schools have access to Apprenticeship Levy funding either through their trust, LA or the ESFA's co-investment scheme
- Best Practice Network are a registered Apprenticeship Provider and have supported 800+ participants to access NPQs utilising levy funding
- Our NPQH & NPQEL have been mapped against a Level 7 Apprenticeship Standard creating 'dual-award' programmes
- The dual-award programmes provide participants the DfE's NPQs inside the comprehensive wraparound support of an apprenticeship route
- Apprenticeship webinar: https://us06web.zoom.us/webinar/register/WN_kn4Q-PNFQCOTxcZ0CcwUrw

Next steps

- NPQs can be viewed and application accessed using the following links www.bestpracticenetwork.co.uk/npq or www.outstandingleaders.org/npq
- Download the relevant DfE NPQ qualification framework specification from the DfE website
- Discuss your application with your school CPD lead, headteacher or relevant senior leaders
- Contact Best practice Network through the live chat function on our web site, enquiries@bestpracticenetwork.co.uk or phone [0117 920 94028](tel:011792094028)
- Register your interest through the relevant NPQ webpage. You will be contacted when full applications are open



Best
Practice
Network



Outstanding
Leaders
Partnership

Learn. Share. Grow.